



Austin Thin Films Inc

June 2009 Product Catalog

Toll-free phone: 800-268-6163
Phone: 512-246-1122
Fax: 512-246-1133
Email: sales@dichro.com

www.dichro.com



Austin Thin Films Inc

4616 W Howard Lane, Suite 110
Austin, Texas 78728

Table of Contents

Page	Content	Subcategories
3	Useful Technical Information	
4	Policies	Qualifications for Wholesale Pricing Ordering from Austin Thin Films Glass Size Payment International Shipping Delivery Returns Email
5	Sample Sets	Color Sample Sets Textured Glass Magic Box Sample Sets Tie-Dye Sample Sets Laser Etch Sample Sets
6	Laser Etching Information & Other Pre-Packaged Items	Laser Etching Information Noodles Rods Stringers Hot Stix Scrap
7	Solid Colors	Standard Colors Premium Colors Ultra Premium Colors
8	Glass Sizes & Pattern Information	Solid Color, Chamber Pattern & Etched Sheet Sizes Chamber Pattern Information
9-10	In Stock Glass Manufacturers (Listed Alphabetically)	Bullseye Float Moretti Spectrum Uroboros Uroboros 96
10	Tie-Dye Information	Tie-Dye Sheet Sizes Tie-Dye Pattern Information
11-12	Order Form	

DichroMagic®

Technical Information

Dichroic is defined in the dictionary as “The property of a surface of reflecting light of one color and transmitting light of other colors.” Transmitted colors are what you see when you would look through a piece of DichroMagic® glass. Reflected colors are the colors you see when you hold the glass at an angle, and will be the opposite color of the transmission.

Dichroic coatings are produced by vacuum depositing multiple thin layers of exotic materials onto a glass substrate. This creates an optical filter that can selectively reflect and transmit wavelengths of light. A vacuum chamber is needed in order to produce a pure environment for depositing the thin film materials. The vacuum produced is similar to that of outer space. The proprietary evaporants are vaporized in a crucible located in the bottom of the vacuum chamber, by a high voltage electron beam onto the rotating glass above. The glass is also rotated in the chamber through this vaporization process in order to deposit uniform coatings on the glass. Due to the difficult coating process there can be slight differences in color throughout the sheet, or from one sheet to the next.

DichroMagic® has many uses from stained glass, fused jewelry, tiles, slumped bowls, lamp worked beads, blown paperweights and vessels to cast sculpture. DichroMagic® dichroic glass is a state of the art thin film combining the science of vacuum deposition and optical filters with the art of glass. DichroMagic® dichroic is designed to remain highly stable at fusing and glassblowing temperatures while retaining the beautiful optical properties and colors.

This endurance is due to the state of the art equipment installed in our optical coating laboratory. The DichroMagic® coating is enhanced with a tough overcoat giving it high temperature resistance and scratch resistance. Due to its unique properties, DichroMagic® is the choice for dichroic glass art. The only limitation is your own imagination.

After fusing or lampworking dichroic glass, the color will shift towards the left on the visible color spectrum, depending on the thickness of the dichroic coating, the amount of time and temperature fired for a specific kiln, the number of firings, the type of base glass, and the exact application of the DichroMagic® in the project. Always choose colors that will have room to shift towards your desired resulting color. Also, individual kilns fire differently and it is important to test color shifts before entering into large projects. The color codes for DichroMagic® are arranged in order from the thinnest (LY) to the thickest (SR). After selecting the correct color needed for your final product, go to the next thickest color. For example, if you desire a blue transmit/yellow reflect, (BL), choose a light blue transmit/gold reflect (LB). Upon cooling, the color will shift from light blue to blue. Thinner colors such as LY, YE, and AM may shift beyond the desired results if your process is very hot. We recommend fusing a test palette using the color sample set to see how much firing temperature will affect the color shift. The best way to see what the color shift should be is to view the dichroic at a 45-degree angle. That color whether it is from the reflection or the transmission will be the shifted color.

Upon firing, DichroMagic® produces a unique crazing pattern depending on the color, glass texture, glass thickness, coating color, and fusing technique. The dichroic coating will fuse readily to uncoated glass. In general, two dichroic layers will not fuse directly to each other.

For hot glass processes such as blown, lamp work, and cast glass, DichroMagic® should be used with care. At extended temperatures above 1800 degrees F dichroic coatings can oxidize rapidly causing drastic shifts in color. We suggest at temperatures at or above 2000 degrees F the glass be applied with the dichroic layer away from the flame. By gathering or fusing a layer of clear over the coating, the dichroic can be encased and protected from destruction. When glass is blown and stretched, the dichroic coating will be fractured into smaller pieces. Bead making using the dichroic-coated side out of clear glass DichroMagic® works well provided you do it with care.

DichroMagic® with stained glass is a fantastic way to illuminate an area with pure brilliant color. The thin film can be scratched or destroyed by corrosive flux, patina, and glazing materials, so the dichroic layer should be protected. To temporarily protect the glass, a resist such as contact paper will work. It can be permanently protected by fusing or gluing (laminating) clear glass on top. A clear spray or brush overcoat of acrylic coating can be applied to seal it in, but be aware that overcoats will cause color shifts. **It is important to never soak dichroic-coated glass in water for an extended period of time.** Feel free to contact us with any questions you may have.



Austin Thin Films Inc

Toll Free 800-268-6163

Phone 512-246-1122

Fax 512-246-1133

sales@dichro.com

www.dichro.com

DichroMagic®

June 2009

Ordering From Austin Thin Films

Orders should be faxed to Austin Thin Films at 512-246-1133, emailed to sales@dichro.com or mailed to 4616 W Howard Lane, Suite 110, Austin, Texas 78728. We require written verification of all orders. The minimum amount for every wholesale order is \$100. Blanket orders are always welcome.

Qualified Wholesale Buyers Only

We reserve the right to decide who qualifies. You must provide us with a legible tax resale certificate and business license by fax or mail, or for international buyers, proof of business license document. Residents of Texas need to mail us a signed Texas Resale Certificate.

Payment

Austin Thin Films does not offer terms for payment. All orders must be prepaid to Austin Thin Films. We accept Visa, MasterCard, Discover, American Express, Pay Pal, Wire Transfer, and Electronic Check.

International

Shipping for international is UPS Expedited unless otherwise arranged. We also need a V.A.T., Importers or R.F.C. number for customs purposes. Orders must be prepaid by credit card, pay pal, or wire transfer.

Shipping Policy

Shipments are sent UPS Ground, unless otherwise requested. We can also ship freight collect F.O.B. our dock, Austin, Texas. Export crates are \$30. We are not liable for damages incurred during shipment. We will make every effort to make sure your shipment is properly packaged, so please inspect all packages for evidence of damage. Claims must be filed with the carrier. For UPS, do not continue opening package, notify UPS and call us. We will file the claim.

Delivery

Delivery times will vary depending on the size of the order and availability of products. Typical delivery time of items that need to be produced can be 1 to 3 weeks but are usually much faster.

Return Policy

We do not accept returns due to the nature of the product unless there is a problem, which is very rare. Returns due to damage or shipment errors must be pre-approved by Austin Thin Films, Inc. Your satisfaction is important to us!

E-Mail

We encourage our customers to communicate with us by email and to make sure we have an email contact for you so we can send you the latest Product Catalogs and up-to-the-moment special deals.

DichroMagic®

DichroMagic® Color Sample Sets			
<i>Product Code</i>	<i>Product Name</i>	<i>Glass</i>	<i>DichroMagic colors</i>
CSS90B	Uroboros Thin Fusible 90 Color Sample Set - Black	19 Black 1.5"x3"	19 colors
CSS90C	Uroboros Thin Fusible 90 Color Sample Set - Clear	19 Clear 1.5"x3"	19 colors
CSS90	Uroboros Thin Fusible 90 Color Sample Set	19 Black, 19 Clear 1.5"x1.5"	38 pieces
CSS96B	Spectrum Thin Fusible 96 Color Sample Set - Black	19 Black 1.5"x3"	19 colors
CSS96C	Spectrum Thin Fusible 96 Color Sample Set - Clear	19 Clear 1.5"x3"	19 colors
CSSF	Float Glass Color Sample Set	1, 1.5, 2, or 3mm 2.5"x4"	19 colors
CSS104B	Moretti Color Sample Set - Black	17 Black 2.5"x4"	17 colors
CSS104C	Moretti Color Sample Set - Clear	17 Clear 2.5"x4"	17 colors

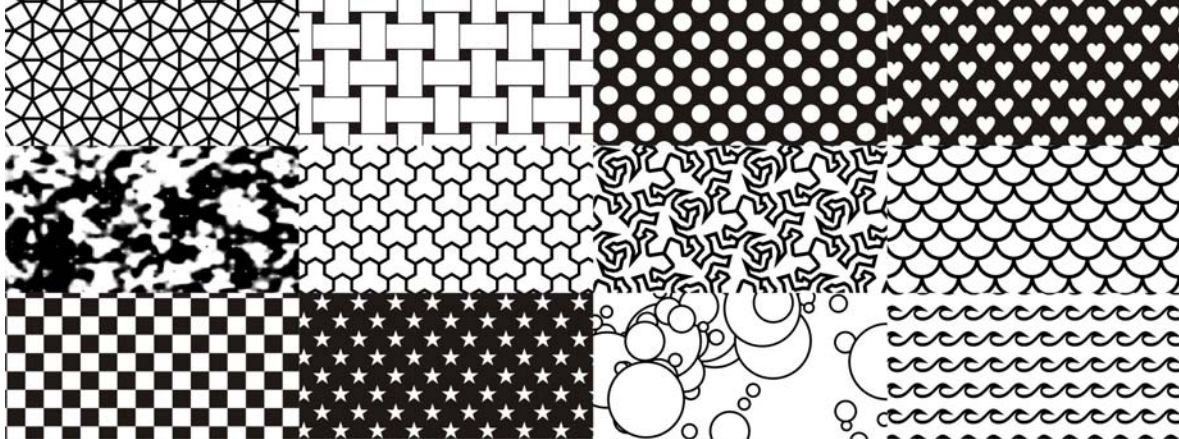
Magic Box Sample Sets			
<i>Product Code</i>	<i>Product Name</i>	<i>Size</i>	<i>Description</i>
MBOX90	Uroboros 90 COE Magic Box	2.5"x4"	16 Assorted colors; 8 on Black and 8 on Clear
MBOX90B	Bullseye 90 COE Magic Box	2.5"x4"	16 Assorted colors; 8 on Black and 8 on Clear
MBOX96	Uroboros 96 COE Magic Box	2.5"x4"	10 Assorted colors; 5 on Black and 5 on Clear
SMBOX	Spectrum Magic Box – Not All Tested Compatible	2.5"x4"	10 Assorted colors; 2 on Black and 8 on Clear

Tie-Dye Sample Sets			
<i>Product Code</i>	<i>Product Name</i>	<i>Qty-Size</i>	<i>Description</i>
COMBOX	Tie-Dye Combination Sampler	12-2"x4"	2 RB & 1 PR pieces of each Tie-Dye pattern. Available in 104, 96 & 90 COE on Black & Clear
FARBOX	Tie-Dye Far Out Sampler	6-4"x4"	4 RB & 2 PR pieces. (Spiral Pattern) Available in 104, 96 & 90 COE on Black & Clear
FRKBOX	Tie-Dye Freaky Sampler	6-4"x4"	4 RB & 2 PR pieces. (Ribbed Pattern) Available in 104, 96 & 90 COE on Black & Clear
FUNBOX	Tie-Dye Funky Sampler	6-4"x4"	4 RB & 2 PR pieces. (Box Pattern) Available in 104, 96 & 90 COE on Black & Clear
GRVBOX	Tie-Dye Groovy Sampler	6-4"x4"	4 RB & 2 PR pieces. (Spotch Pattern) Available in 104, 96 & 90 COE on Black & Clear

Laser Etch Sample Sets			
<i>Product Code</i>	<i>Product Name</i>	<i>Qty-Size</i>	<i>Description</i>
LESET	Laser Etch Sample Set	12-2"x4"	1 of each Standard Etched Pattern – Assorted Colors Available in 90, 96, or 104 COE on Black & Clear

Austin Thin Films Laser Etching Services:

Patterns can be altered in many ways. Dots, hearts, squares, stars, etc... can be aligned in straight rows or off set. They can be done in any size & the distance between them changed. You may specify the size and spacing distance. The following are our Standard Patterns for our Laser Etch Set. We can also etch any submitted black & white image files you send us. Hand drawings can be scanned & reproduced as well. Remember that very fine details in small drawings may not fuse well when done on textured glass.



The Dichroic Coating is the white part of any proof or picture. All files must be black and white only, no grayscale or color drawings. Please make allowances for clip marks (1/8" from edge of glass.) All files must be proofed and approved by signing the proof form & submitting it to ATF by Email, Fax or Postal Services before etching can begin. If a file has already been approved and is in our archives, it may be referred to and etched without a new proof being submitted. Any electronically submitted files must be a minimum of 300 DPI and sized accordingly. Any graphic design work is done is at a charge of \$25 per hour with a one-hour minimum. The cost of laser etching is \$0.12 per square inch.

Pre Packaged Items

Product Code	Product Name	Description
NDL	Noodles	15 pieces -16" long (~1mm x ~2mm) - Assorted Colors Available in 96 & 90 COE on Black or Clear Glass
ROD	Rods	10/50 pieces - 16" long ~4mm diameter - Assorted Colors, Available in 104, 96 & 90 COE on Black or Clear Glass
STR	Stringers	50 pieces - 16" x ~1mm diameter - Assorted Colors Available in 104, 96 & 90 COE on Black or Clear Glass

It is possible to coat a full pack of the same color of Noodles, Rods Or Stringers. Call For Info.

Hot Stix

Product Code	Product Name	Description
HS	Hot Stix	10 pieces - 8"x1/4" - Assorted Colors Available in 104, 96 & 90 COE on Black or Clear Glass
TD-HS	Tie-Dye Hot Stix	10 pieces - 10"x1/4" Available in 96 & 90 COE; 8"x1/4" - Available in 104 on Black or Clear Glass - Assorted Colors

Bulk Scrap & Scrap Bags (1 lb, 1/2 lb & 1/4 lb)

Mix of glass we normally stock, color availability is generally rainbow (cannot be specified.)

Scrap with pattern is available on smooth glass.

Please specify COE (See Chart Below), Black (B) or Clear (C), Standard (S) or thin (T)

Please add a P for Patterned and/or Bag for Broken Shards.

S90B	Bullseye/Uroboros 90 Black Scrap	S104	Moretti 104 COE Scrap
S96B	Spectrum/Uroboros 96 Black Scrap	SFit	Float Scrap

For example: S90CS is Scrap - 90 COE – Clear – Standard

DichroMagic®

June 2009

Colors

(Please note that we can provide any color listed below on any glass type. For images of our colors, please see our website at <http://www.dichro.com/Order.htm>)

<i>Code</i>	<i>Transmitted</i>	<i>Reflected</i>	<i>Post-Firing Shift Reflected (Approx.)*</i>
Standard Colors			
LY	Light Yellow	Violet	Dark Violet
YE	Yellow	Dark Blue	Violet
AM	Amber	Bright Blue	Dark Blue
PI	Pink	Turquoise	Bright Blue
MA	Magenta	Teal	Light Blue to Turquoise
VI	Violet	Yellow / Green	Turquoise / Teal
BL	Blue	Yellow	Teal / Yellow Green
LB	Light Blue	Gold	Yellow
CY	Cyan	Copper	Gold
RB	Rainbow	Rainbow (Target)	RR, CY, LB, BL (Varies)
RB2	Rainbow 2	Rainbow (Radiant)	RR, CY, LB, BL (Varies)

Premium Colors			
RR	Clear	Red	Red / Red Orange
TQ	Turquoise	Lighter Pink	Golden to Greenish Hue
TE	Teal	Light Pink	Golden pinkish hue
GR	Green	Pink	Light Pink
MR	Yellow/Green	Magenta	Bright Magenta
OR	Orange	Cyan	Light Blue
RE	Red	Light Cyan	Cyan
PR	Premium Rainbow	Rainbow (Target)	VR, MR, GR, TE, TQ (Varies)
PR2	Premium Rainbow 2	Rainbow (Radiant)	VR, MR, GR, TE, TQ (Varies)

Ultra Premium Colors			
XR	Clear	Dark Red	Red
VR	Pink-Violet	Violet	Bright Pink / Violet
SR	Silver Reflector	Silver	Silver

*Results Vary, see technical information.

RB and PR are not available in 2.5"x8"

Solid Color Glass Sizes			
<i>Size Code</i>	<i>Description</i>	<i>Size Code</i>	<i>Description</i>
16x16	16"x16" Full Sheet	8x8	8"x8" Quarter Sheet
8x16	8"x16" Half Sheet	2.5x8	2.5"x8" Strip

Ordering examples:

Codes	What the code means.
16x16-UTCRA-RE	Full sheet of Uroboros Thin Radium Clear with Red dichroic coating
16x16-BTC-RR (UFO)	Full sheet of Bullseye Thin Clear with Red Reflector dichroic coating and UFO pattern.
8x16-SP100K-CY	Half sheet of Spectrum Krinkle with Cyan dichroic coating.
8x8-SP1009SFL-SR (Dots)	Quarter sheet of Spectrum Black Thin with Silver Reflector dichroic coating and etched with Dots
2.5x8-MB-MR	2.5"x8" Strip Moretti Black – Magenta Reflector dichroic coating

Note – Manufacturing Methods vary between Tie-Dye & Solid/Etched/Patterned Sheets, see Tie-Dye section below Glass Types for Tie-Dye Sizes.

Chamber Coated Patterns				
UFO	SQUARES	DOTS	CLOVER	HONEYCOMB
STRIPES	SMALL SQUARES	SMALL DOTS	MARQUIS	

DichroMagic®

June 2009

Glass

Note -- The glass types listed below are “stock” items. Any type of flat glass up to a ½” thick can be coated. Custom orders are always welcome; please contact us for further details.

Please include the Glass Code for all Sheet Orders.

<i>Glass Code</i>	<i>Description</i>	<i>Glass Code</i>	<i>Description</i>
Bullseye - 90 COE		www.bullseye-glass.com	
BTC	Thin Rolled Clear	BTB	Thin Rolled Black
BSC	Standard (Double Rolled) Clear	BSB	Standard (Double Rolled) Black
BCHR	Clear Herringbone Ripple	BBHR	Black Herringbone Ripple
BCRD	Clear Reed	BBRD	Black Reed
BTCRD	Thin Clear Reed	BTBRD	Thin Black Reed
BCA	Clear Accordion	BBA	Black Accordion
BTCA	Thin Clear Accordion	BTBA	Thin Black Accordion

Float Glass (Not tested compatible)							
FLT1	1mm float	FLT1.5	1.5mm float	FLT2	2mm float	FLT3	3mm float

Moretti - 104 COE		www.effetre.com	
MB	Black	MC	Clear (Crystal)

Spectrum		www.spectrumglass.com	
SP100SFS	Clear Smooth Standard- System 96	SP1009SFS	Black Smooth Standard- System 96
SP100SFL	Clear Smooth Thin - System 96	SP1009SFL	Black Smooth Thin - System 96
SP100W	Clear Waterglass	SP1009W	Black Waterglass
SP100BRQ	Clear Baroque	SP100GG	Clear Crystal Ice
SP100C	Clear Cord	SP100H	Clear Hammered
SP100CQ	Clear Crackle	SP100K	Clear Krinkle
SP100CZ	Clear Corteza	SP100R	Clear Ripple
SP100G	Clear Granite	SP100QR	Clear Quarter Reed

DichroMagic®

June 2009

<i>Glass Code</i>	<i>Description</i>	<i>Glass Code</i>	<i>Description</i>
Uroboros - 90 COE		www.uroboros.com	
UTC	Thin Clear	UTB	Thin Black
UCF	Clear Fibroid	UBF	Black Fibroid
UTCf	Thin Clear Fibroid		
UCG	Clear Granite	UBG	Black Granite
UCFP	Clear Fipple	UBFP	Black Fipple
USC	Standard Clear	USB	Standard Black
UCRA	Clear Radium	UBRA	Black Radium
UTCRA	Thin Clear Radium	UTBRA	Thin Black Radium
UCGR	Clear Granite Ripple	UBGR	Black Granite Ripple
UCR	Clear Herringbone Ripple		

Uroboros - System 96			
UTC96	Thin Clear	UTB96	Thin Black
UCF96	Clear Fibroid	UBF96	Black Fibroid
USC96	Standard Clear	USB96	Standard Black
UCRA96	Clear Radium	UBRA96	Black Radium
UCG96	Clear Granite	UBG96	Black Granite
UCGR96	Clear Granite Ripple	UBGR96	Black Granite Ripple

Tie-Dye Glass Sizes

<i>Size Code</i>	<i>Description</i>	<i>Size Code</i>	<i>Description</i>
20x20	20"x20" Full Sheet	10x10	10"x10" Quarter Sheet
10x20	10"x20" Half Sheet		

Tie-Dye Patterns

Please see our website for images of the patterns

<i>Pattern Code</i>	<i>Description</i>	<i>Pattern Code</i>	<i>Description</i>
FAR	Far Out (Spiral Pattern)	FUN	Funky (Box Pattern)
FRK	Freaky (Ribbed Pattern)	GRV	Groovy (Spotch Pattern)

Tie-dye is only available in Rainbow, Rainbow2, Premium Rainbow & Premium Rainbow 2.

Tie-Dye Ordering examples:

Codes	What the code means.
20x20-UTC-RB2 (FAR)	Full sheet of Uroboros Thin Clear with Far Out Pattern in Rainbow 2 dichroic coating
10x20-BTB-PR (FUN)	Half sheet of Bullseye Thin Black with Funky Pattern in Premium Rainbow dichroic coating
10x10-SP100SFS-RB (GRV)	Quarter sheet of Spectrum Standard Clear with Groovy Pattern in Rainbow dichroic coating.



Austin Thin Films Inc
 4616 W Howard Ln, Suite 110
 Austin, Texas 78728

Page 1 of _____

Toll Free 800-268-6163
 Phone 512-246-1122
 Fax 512-246-1133
 sales@dichro.com
 www.dichro.com

Provide Shipping Information

Company Name						<input type="checkbox"/> New Customer	
Address							
Address							
City				State			
Zip Code				Country			
Account Name				Contact Name			
PO Number				Phone Number			
Needed By				E-Mail			
Ship via		<input type="checkbox"/> UPS Ground (Commercial) <input type="checkbox"/> UPS Ground (Residential) <input type="checkbox"/> Other					
NOTE: ATF will process the order according to the Product, Glass and Color Codes noted on order form.							
Qty	Product Code	Color Code	Glass Code	S, P or U Color Price	Description	Unit Price	Ext. Price
Payment Details: <input type="checkbox"/> Check / Money Order <input type="checkbox"/> Wire Transfer <input type="checkbox"/> Credit Card Credit Card # _____ Name on card _____ Exp. Date (mm/yy) _____ Type _____ CC Billing Address: _____ Special Instructions:						Subtotal	
						Page 2 Subtotal	
						S & H	
						Tax	
						Total	
						Minimum Order: \$125.00 Must be prepaid.	
ATF USE ONLY			Date Order Received			Order #	

